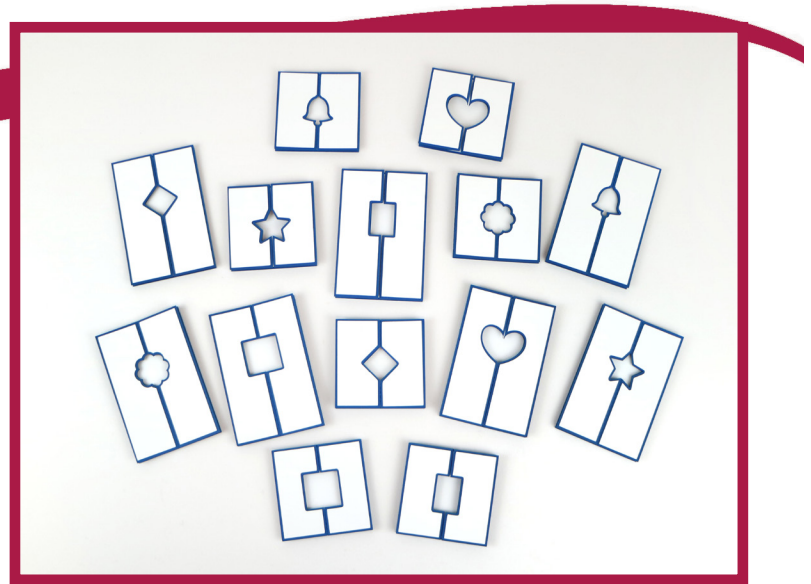


## Aperture Gate Fold Cards



1. Cut your preferred Aperture Gate Fold Card from your chosen cardstock.
2. Cut the corresponding mats from your chosen cardstock.
3. Attach the mats to the card.
4. Mountain fold along the two score lines on the outer part of the card.
5. Valley fold along the remaining score lines.

## Bankers Flap Envelope



1. Cut your preferred Envelope from your chosen cardstock.
2. Cut the corresponding mats from your chosen cardstock.
3. Valley fold along all the score lines.
4. Attach adhesive to the tabs either side and fold up the bottom of the envelope.
5. Decorate the front of the envelope with the mat, or use as a card.

## Baronial Envelope



1. Cut your preferred Envelope from your chosen cardstock.
2. Cut the corresponding mats from your chosen cardstock.
3. Valley fold along all the score lines.
4. Attach adhesive to the tabs either side and fold up the bottom of the envelope.
5. Use the mat to decorate the front of the envelope, or use as a card.

## Booklet Envelope



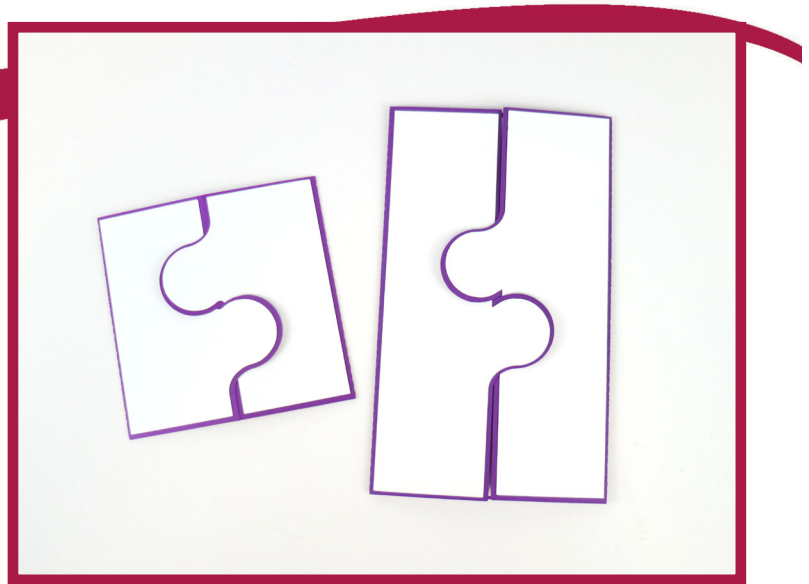
1. Cut your preferred Envelope from your chosen cardstock.
2. Cut the corresponding mats from your chosen cardstock.
3. Valley fold along all the score lines.
4. Attach adhesive to the tabs either side and fold up the bottom of the envelope.
5. Use the mat to decorate the front of the envelope, or use as a card.

## Calendar Card



1. Cut your preferred Calendar Card from your chosen cardstock.
2. Cut the corresponding mat files from your chosen cardstock.
3. Place the card blank with the solid panel on the left-hand side and the doors face down on the right-hand side.
4. Mat one of the solid mat pieces into the centre panel. Valley fold the door panel and mat onto the centre panel.
5. Mat the remaining solid mat piece onto the inside of the card, to the back of the front panel.
6. Stick the apertured mat onto the card front over the doors.

## Clasp Card



1. Cut your preferred Clasp Card from your chosen cardstock.
2. Cut the corresponding mat files from your chosen cardstock.
3. Attach the mats onto the card.
4. Reinforce the score lines and valley fold the sides into the centre so that the circles interlock and form a clasp.

## Concertina Greetings Card



1. Cut the pieces of your preferred Concertina Greetings Card from your chosen cardstock.
2. Mat the pieces together using the tabs at the ends. Lay the pieces down first to ensure they're in the right order and mat the tabs on the back to keep the areas for the mat pieces clear.
3. Reinforce along the score lines and concertina fold the whole greeting by alternating valley and mountain folds.
4. Cut the corresponding mat pieces from your chosen cardstock and mat onto the card.

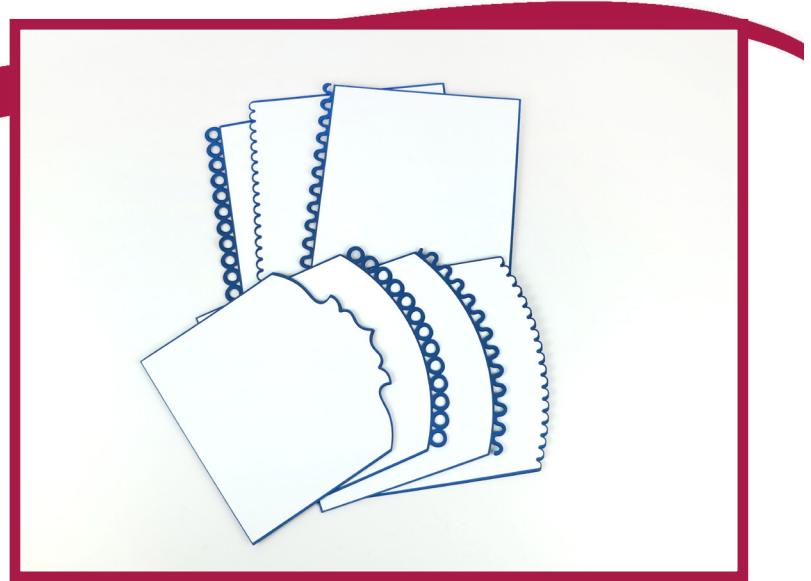
## Drop Out Collection



1. Cut your preferred Drop Out Rectangle or Square from your chosen cardstock.
2. Choose your preferred cardstock for the corresponding Backer and cut.
3. Attach adhesive to the card and stick the mat behind it.

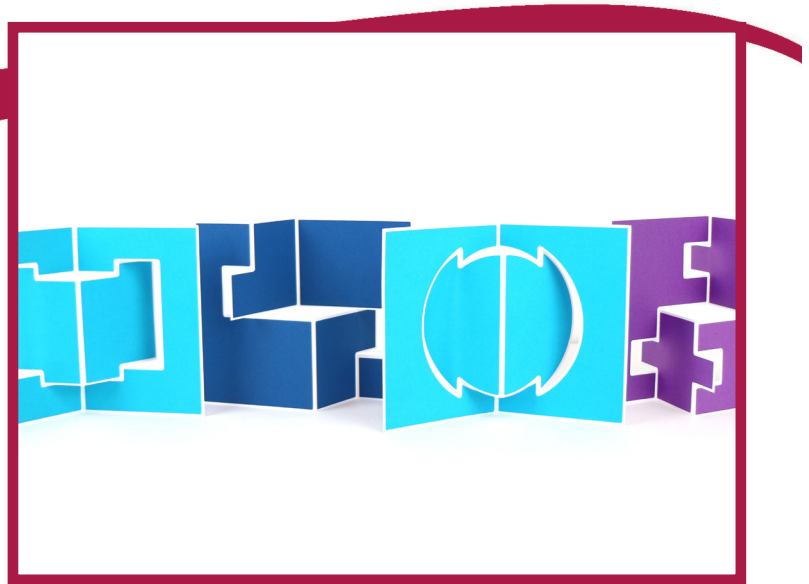


## Edged Card



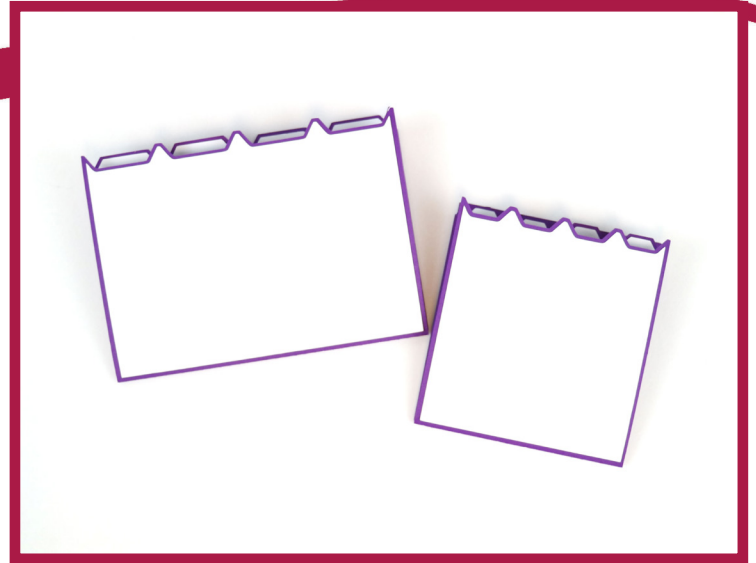
1. Cut your preferred Edged Card from your chosen cardstock.
2. Reinforce along the central score line and valley fold.
3. Cut the corresponding mat pieces from your chosen cardstock.
4. Stick the mat pieces onto the card.

## Extra Card Collection



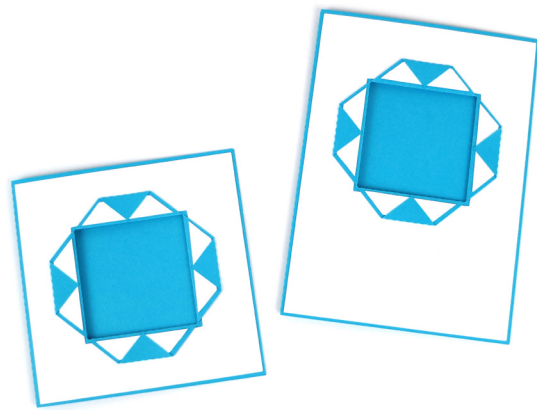
1. Choose your preferred Extra Card from your chosen cardstock.
2. Cut the corresponding mats from your chosen cardstock.
3. Valley fold along the score lines as shown.
4. Mat the pieces onto the card.
5. Push into place as shown.

## File Card



1. Cut your preferred File Card from your chosen cardstock.
2. Reinforce along the score lines and valley fold each piece.
3. Cut the corresponding mat pieces onto the file pieces. Mat on the left-hand sides so that when the card is opened like a book, the mats are facing out.
4. Mat the file pieces with tabbed ends into the remaining file piece, arranged so that the tabs go from left to right from the front to the back.
5. Stick the remaining mat pieces onto the front and back of the card.

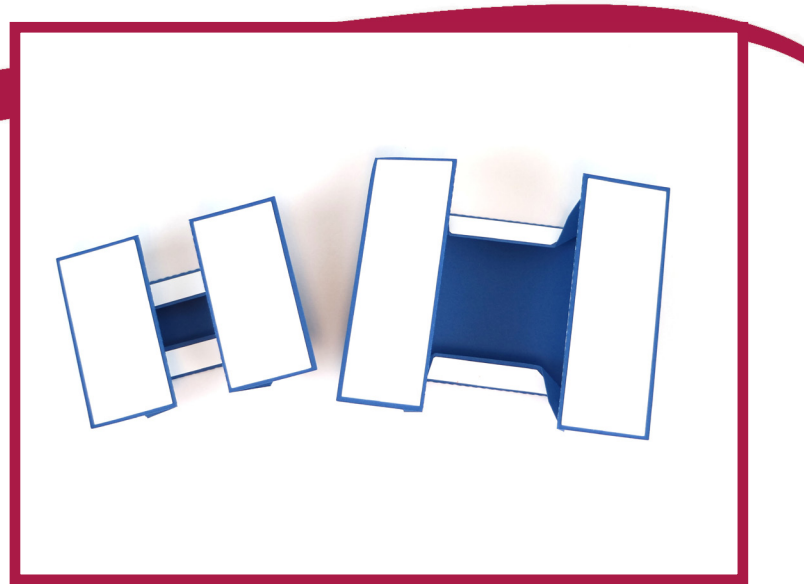
## Fold Back Aperture Card



1. Cut your preferred Aperture Card from your chosen cardstock. Reinforce the central score line and valley fold to make the card.
2. Cut the corresponding mats from your chosen cardstock. Stick the apertured mat onto the card.
3. Reinforce the score lines of the square aperture and mountain fold the triangular sections (leave the tips for now). Mat onto the card front to secure.
4. Mat the trapezium-shaped pieces onto the card, on the bottom halves of the triangular sections.
5. Reinforce the remaining score lines on the card and valley fold the triangular tips. Mat to secure.
6. Stick the remaining mat pieces onto the card.

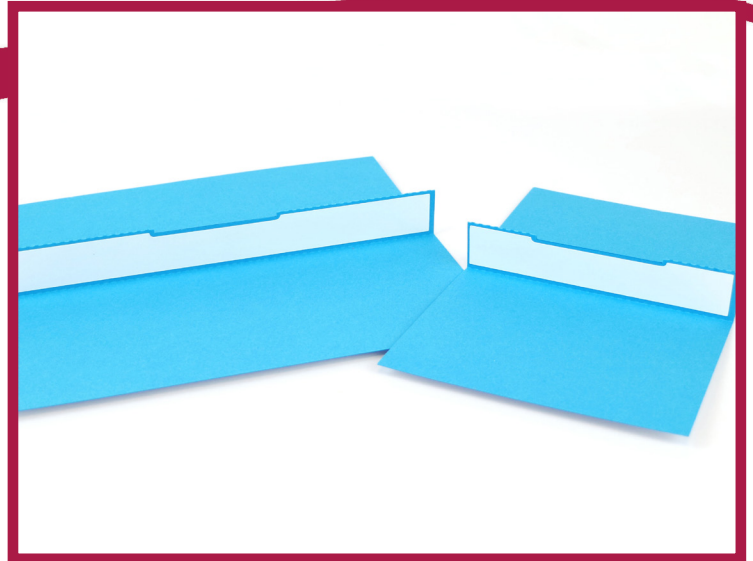
Tip: Use the perforated square on the inside of the card to line up a picture or card insert, or cut it out to create a consistent aperture throughout the entire card.

## Gate Fold Pop Card



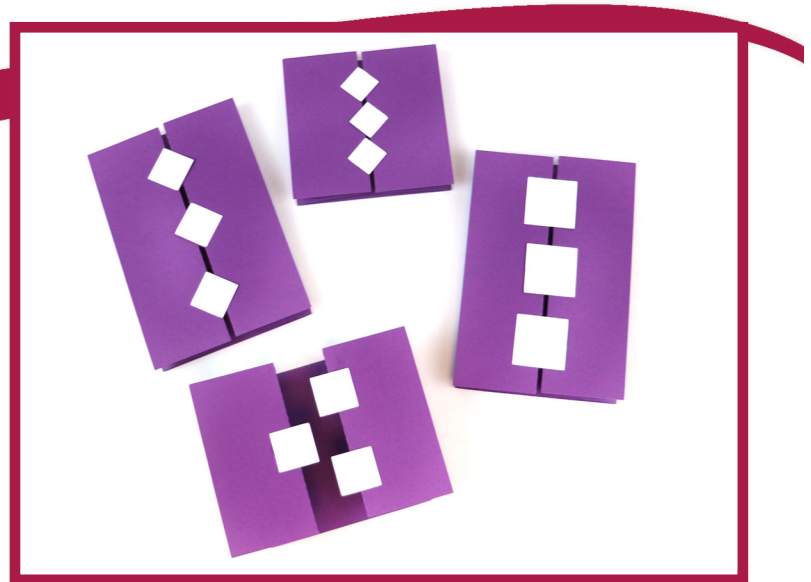
1. Cut your preferred Gate Fold Card from your chosen cardstock.
2. Reinforce the horizontal score lines in the centre and valley fold. Reinforce the diagonal score lines, mountain fold the innermost four and valley fold the outermost four. Finally, reinforce the vertical score lines, mountain fold the outermost two and valley fold the innermost two.
3. Cut the corresponding mat pieces from your chosen cardstock.
4. Stick the mat pieces onto the card.

## Giftcard Card



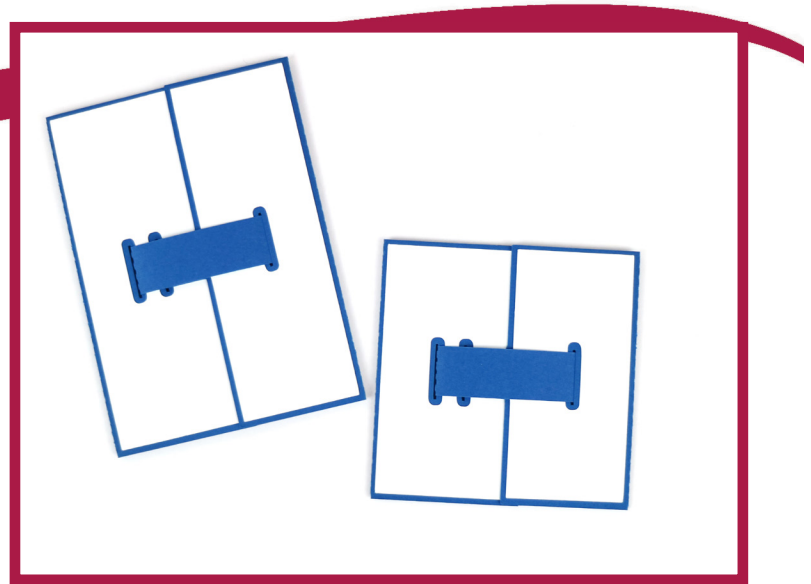
1. Cut your preferred Giftcard Card from your chosen cardstock.
2. Cut the corresponding mats from your chosen cardstock.
3. Mountain fold along the centre score line. Add adhesive either side of the slot and stick.
4. Valley fold along the remaining score lines.
5. Add adhesive to the mats and stick to the outer card and the mat either side of the slots inside the card.

## Interlocking Card



1. Cut your preferred Interlocking Card from your chosen cardstock.
2. Cut the corresponding mats from your chosen cardstock.
3. Mountain fold along the two outer score lines either side of the card.
4. Valley fold along the remaining score lines and fold into place.
5. Add adhesive to the mats and tabs and stick the tabs to the front of the card. Open up the card and stick the mats onto the card.

## Locking Card



1. Cut your preferred Locking Card from your chosen cardstock.
2. Cut the corresponding mats from your chosen cardstock.
3. Valley fold along the two score lines.
4. Add adhesive to the mats and stick to the front of the card.
5. To lock the card, open up the card, push the 'belt' on the right side and slot through. Fold on the score line and push through to the slot on the right side to close.

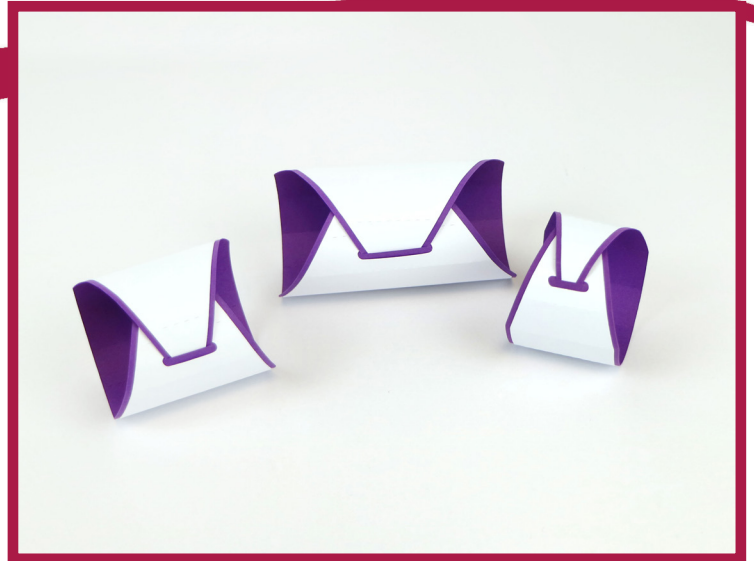


## Magic Eye Card



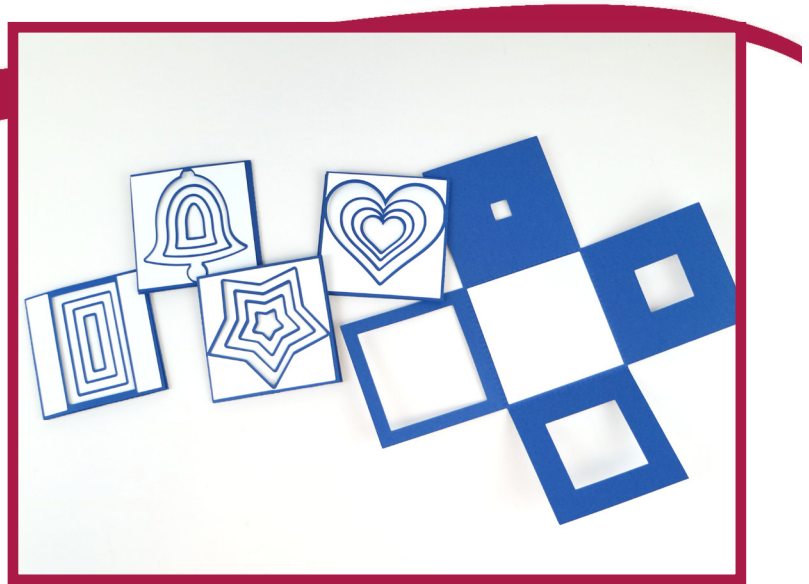
1. Cut your preferred Magic Eye Card from your chosen cardstock. There are four pieces to create this card.
2. Cut the corresponding mats from your chosen cardstock.
3. Valley fold along the two score lines on the card and the two mechanism pieces. The score lines create the tabs.
4. Add adhesive to the mechanism mats and stick onto the corresponding piece. Open up the card, line up a mechanism piece with the tab on the left and stick the tab only onto the card. Repeat for the right side.
5. Stick the corresponding mat to the central aperture panel and stick to the top and bottom only over the mechanism.
6. Close up the card and stick the mats to the front and back of the card.

## Napkin Wraps



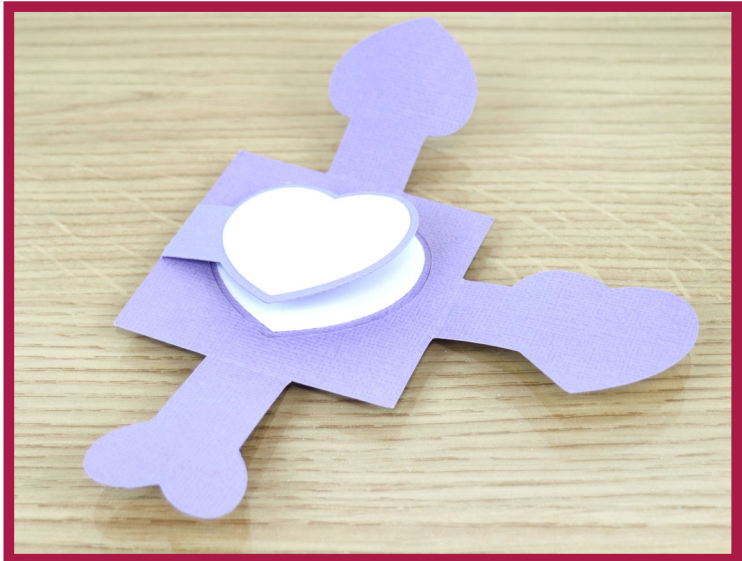
1. Cut out the Napkin Wraps file from your chosen cardstock.
2. Reinforce the score lines and lightly valley fold each one.
3. Cut the mats from your chosen cardstock.
4. Reinforce the score lines and lightly valley fold each one. Mat onto the napkin folds and close by inserting the end into the slit.

## Nested Aperture Fold Card



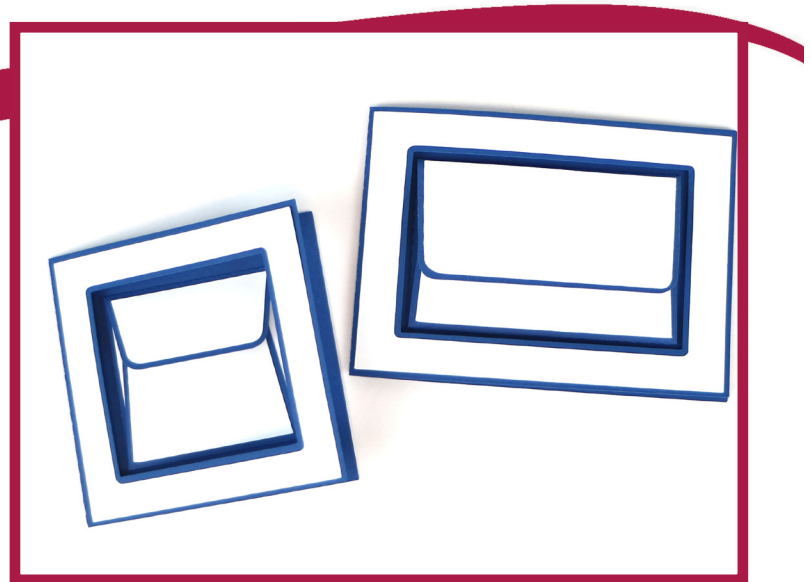
1. Cut your preferred Aperture Fold Card from your chosen cardstock.
2. Reinforce the score lines and valley fold along each.
3. Cut the corresponding mats from your chosen cardstock.
4. Stick the mat pieces onto the card.

## Nested Layer Fold Card



1. Cut your preferred Layer Fold Card from your chosen cardstock.
2. Reinforce the score lines and valley fold along each.
3. Cut the corresponding mats from your chosen cardstock.
4. Stick the mat pieces onto the card.

## Pocket Aperture Card



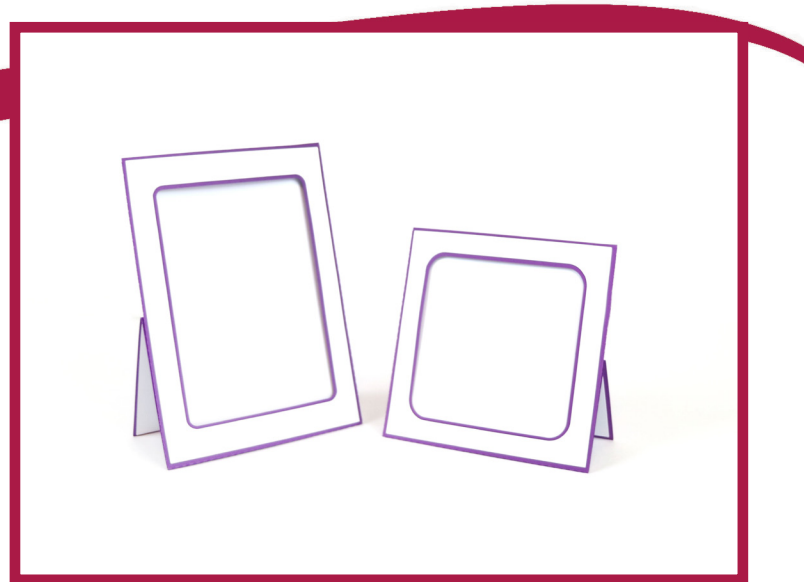
1. Cut your preferred Pocket Aperture Card from your chosen cardstock.
2. Cut the corresponding mats from your chosen cardstock.
3. Working with the Pocket, valley fold along the score lines. Add adhesive to the mats and stick onto the pocket.
4. Fold the tabs into the centre of the Pocket and stick. Stick to the inside of the card.
5. Fold the card into place and stick the remaining mat onto the front of the card.

## Open End Envelope



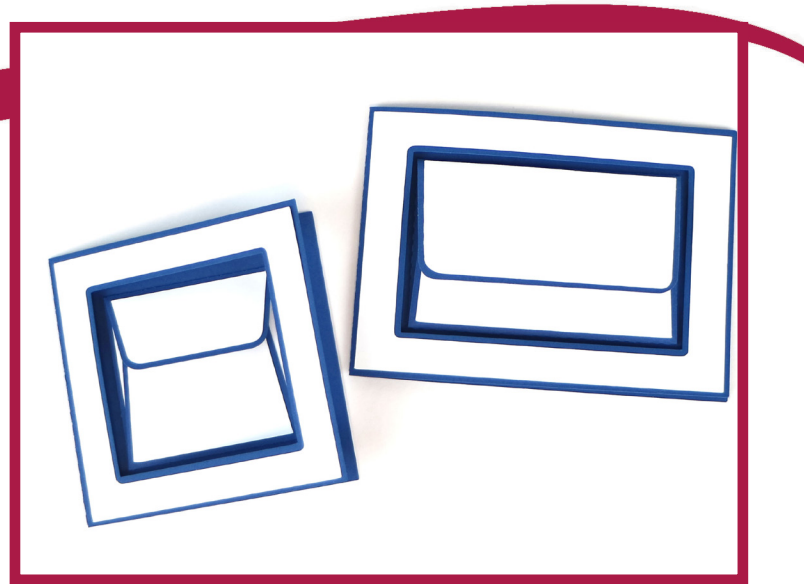
1. Cut your preferred Open End Envelope from your chosen cardstock.
2. Cut the corresponding mats from your chosen cardstock.
3. Stick the mat pieces onto the envelope.
4. Reinforce along the score lines and valley fold along each.
5. Fold the sides into the centre and mat together. Fold up the small bottom section and mat onto the folded sides.
6. Leave the remaining end open.

## Picture Frame Easel Card



1. Cut your preferred Picture Frame Card from your chosen cardstock.
2. Cut the corresponding mats from your chosen cardstock.
3. Stick the mat pieces onto the card.
4. Assemble the card by reinforcing the score lines and mountain folding the vertical score lines. Mat the tab to the corresponding side.
5. Valley fold the score line separating the remaining two panels and mountain fold the remaining horizontal score line, mat onto the back of the card.
6. Slot the tab into the opposite slit to stand the card up.

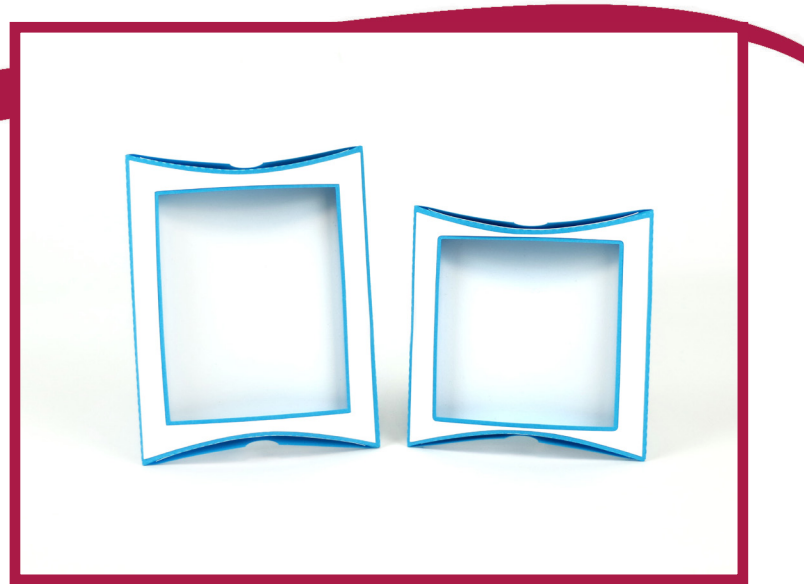
## Pocket Aperture Card



1. Cut your preferred Pocket Aperture Card from your chosen cardstock.
2. Cut the corresponding mats from your chosen cardstock.
3. Working with the Pocket, valley fold along the score lines. Add adhesive to the mats and stick onto the pocket.
4. Fold the tabs into the centre of the Pocket and stick. Stick to the inside of the card.
5. Fold the card into place and stick the remaining mat onto the front of the card.

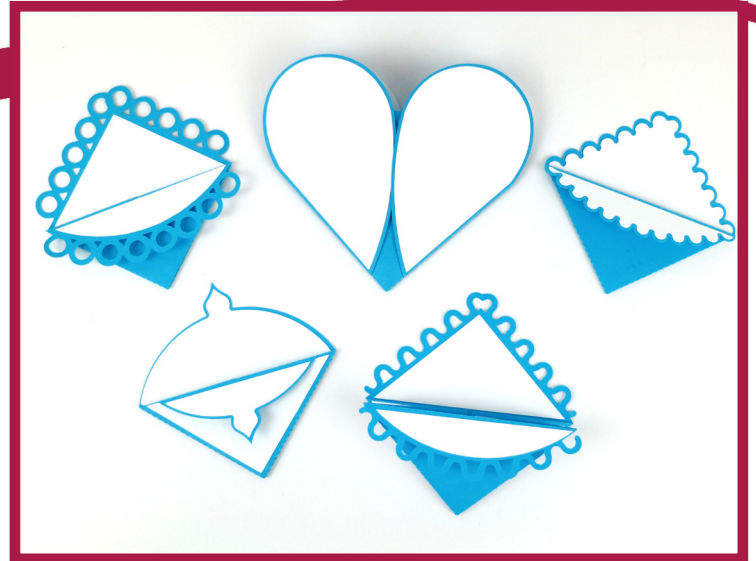


## Pocket Box Frame Card



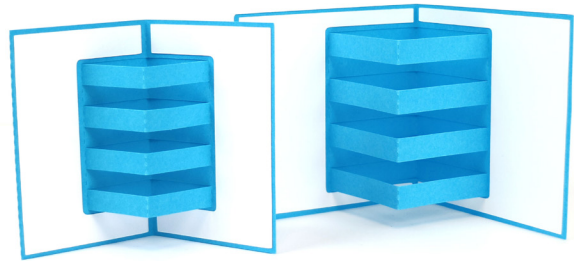
1. Cut your preferred Box Frame Card from your chosen cardstock.
2. Cut the corresponding mats from your chosen cardstock.
3. Stick the mat pieces onto the card.
4. Reinforce the score lines and valley fold to assemble the frame, mat the long tab to the corresponding side.
5. Mat the stand onto the back of the card, valley fold out the triangular section.
6. Fold down the oval section of the stand to hold and secure it.

## Pocket Card



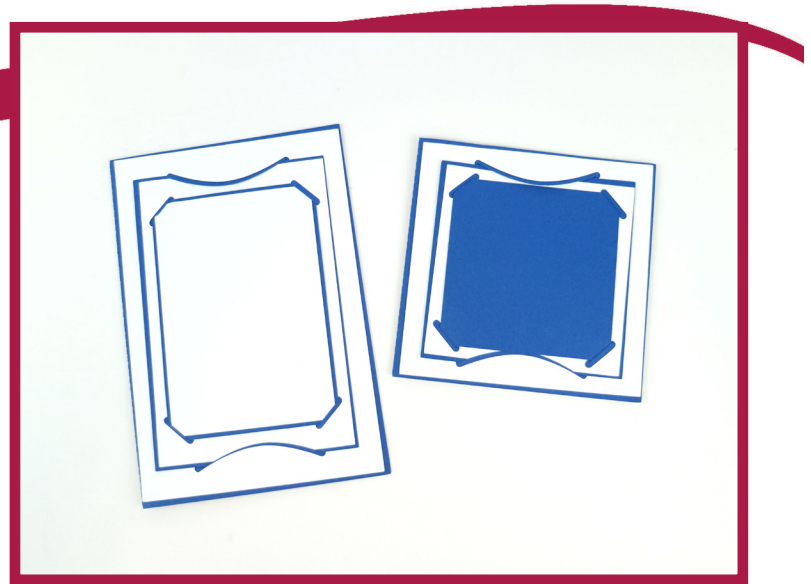
1. Choose your preferred Pocket Card from your chosen cardstock.
2. Cut the corresponding mats from your chosen cardstock.
3. Valley fold on the score lines on the diagonal – the 'X' fold.
4. Mountain fold on the straight score lines.
5. Add adhesive to all the mats and stick to both the inside and outside of the card. Fold the card into place and stick to create the pocket if preferred.

## Pop Up Lines Card



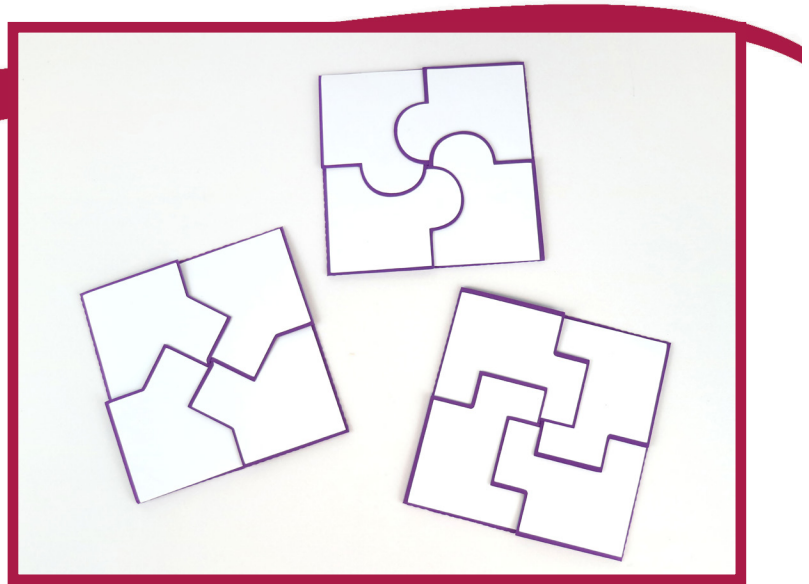
1. Cut your preferred Pop Up Lines Card from your chosen cardstock. Reinforce the score lines on the cut lines and alternate mountain and valley folds in their centres to create the pop-up lines.
2. Assemble the card. If you are using the smaller card file, fold it back on itself and mat together. If you are using the larger card file, mat the solid card onto the back of the lined piece.
3. Cut the corresponding mat pieces from your chosen cardstock.
4. Stick the mat pieces onto the card.

## Postcard Card



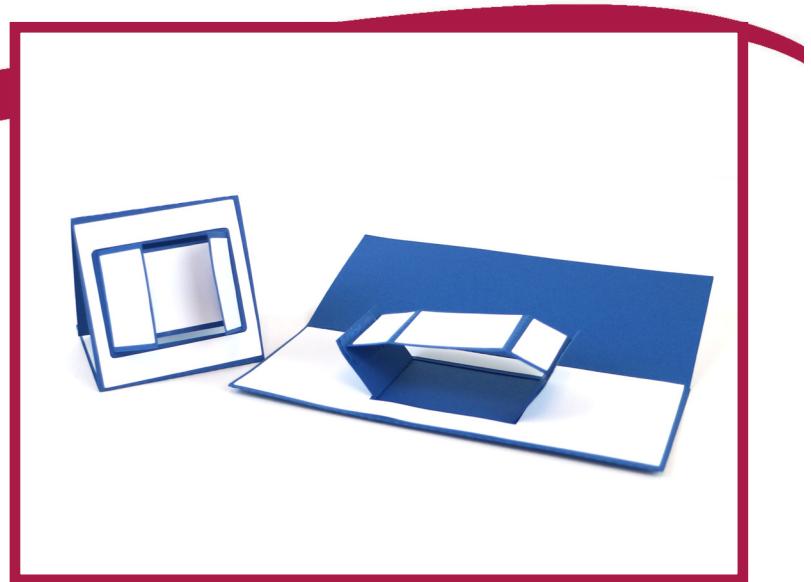
1. Cut your preferred Postcard Card from your chosen cardstock.
2. Cut the corresponding mats from your chosen cardstock.
3. Stick the mat pieces onto the card.
4. Reinforce the score line and valley fold to create the card.  
Assemble the card by slotting the corners of the smallest square into the next square up, then slotting that into the card using the two front tabs to hold it.

## Puzzle Card



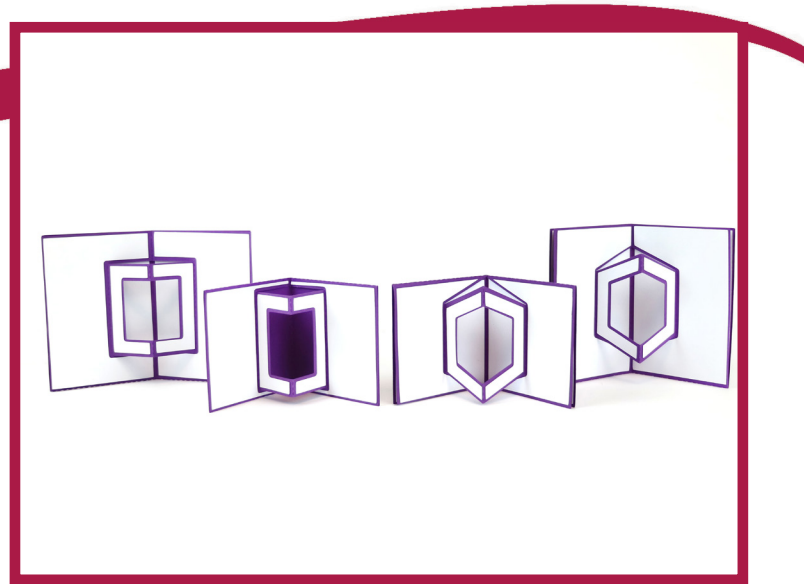
1. Cut your preferred Puzzle Card from your chosen cardstock.
2. Cut the corresponding mats from your chosen cardstock.
3. Valley fold on all four score lines and stick the large square mat onto the inside of the card.
4. Turn the card over and stick the remaining mats onto the card.
5. To close up the card, fold in the left panel, followed by the bottom panel. Tuck the right panel behind the left panel and push the top panel down behind the left panel.

## Shutter Card



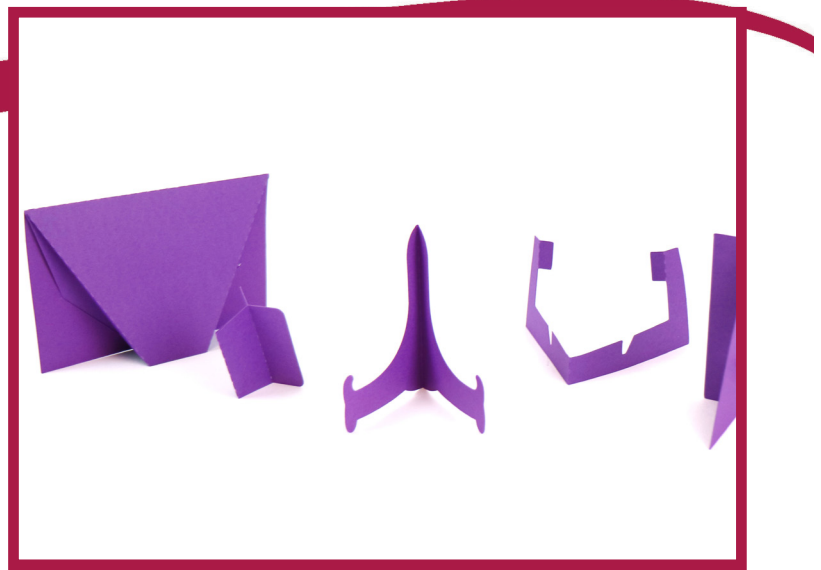
1. Cut your preferred Shutter Card from your chosen cardstock.
2. Reinforce the score lines of the card. Valley fold the left-hand panel and mountain fold the right-hand panel onto the back and mat to secure. Valley fold the panels of the window in the card centre.
3. Reinforce the score lines of the shutter piece. Mountain, valley, valley, and mountain fold the score lines.
4. Cut the corresponding mats from your chosen cardstock.
5. Stick the mat pieces onto the card and shutter piece.
6. Mat the shutter piece onto the inside of the inner window.

## Single Pop Card



1. Cut your preferred Single Pop Card from your chosen cardstock.
2. Reinforce the score lines and mountain fold the card in half, mat together to secure.
3. Cut the corresponding mats from your chosen cardstock.
4. Stick the mat pieces onto the card.
5. Valley fold the score lines either side of the shaped section and mountain fold the small score lines in the centre.
6. Pop out the shape and valley fold the card.

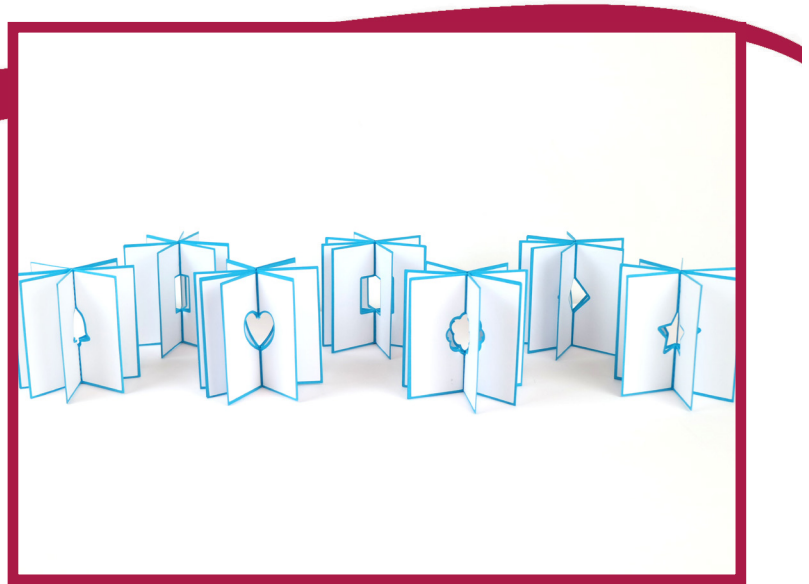
## Stand Collection



1. Cut your preferred Stand from your chosen cardstock.
2. To make Stand 1, fold the stand in half. Mountain fold on the outer score lines and valley fold on the inner score lines. Fold in half and push the points into the slits.
3. To make Stand 2, push down the oval and valley fold on the score line. Push the slit onto the triangle.
4. To make Stand 3, fold in half and mountain fold the two tabs at the top. To make Stand 4, just fold in half.
5. To make Stand 5, fold in half and valley fold on the remaining score lines. Stick the top half of the stand together.



## Star Card



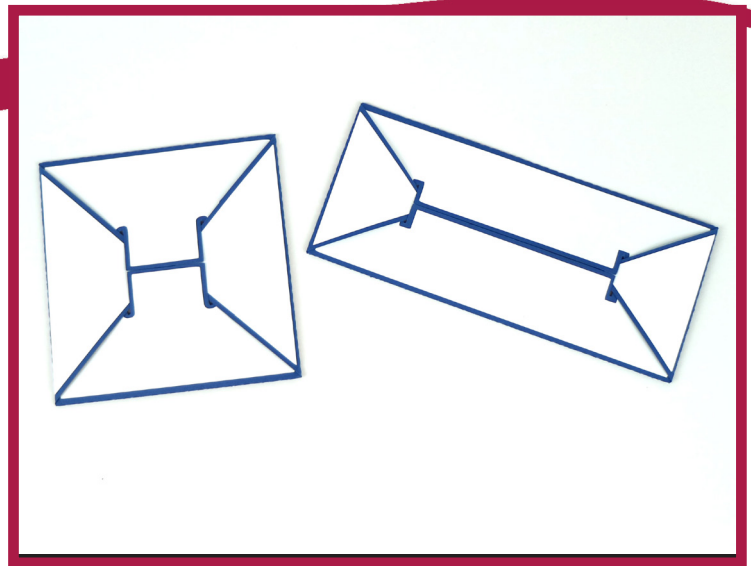
1. Cut your preferred Star Card from your chosen cardstock.
2. Reinforce along each score line and valley fold.
3. Cut the corresponding mats from your chosen cardstock.
4. Stick the mat pieces onto the card pieces.
5. Mat the card pieces back-to-back to create the star card.

## Ticket Envelope



1. Cut your preferred Ticket Envelope from your chosen cardstock.
2. Cut the corresponding mats from your chosen cardstock.
3. Stick the mat pieces onto the envelope.
4. Reinforce the score lines and valley fold along each.
5. Fold the opposite sides into the centre. Fold up the bottom section and mat onto the sides to secure.
6. Fold down the top and secure with PVA glue or by tucking in.

## Top and Bottom Tuck Card



1. Cut your preferred Top and Bottom Tuck Card from your chosen cardstock.
2. Cut the corresponding mats from your chosen cardstock.
3. Valley fold on all the score lines.
4. Stick the large square mat to the centre of the card.
5. Fold both the left and right 'doors' into the centre. Stick the mats onto the doors.
6. Fold the triangles top and bottom into the centre and add the mats. Push the points into the slots to close.

## Wallet Card



1. Cut your preferred Wallet Card from your chosen cardstock.
2. Cut the corresponding mats from your chosen cardstock.
3. Stick the mat pieces onto the card.
4. Reinforce the score lines and valley fold the curved section into the centre. Mat the bottom tab to the inside panel to make the wallet.
5. Valley fold the remaining panel to create the card.