

KITON Caboodle™



Die Cutting Machine Instruction Manual



Contents

	Page		Page
Welcome.....	3	Plate combinations.....	5
Safety instructions	4	Instructions.....	6
What's in the box.....	4	Frequently Asked Questions.....	7
Compatible materials	5		



Welcome to **KIT** *Caboodle*[™] Die Cutting

Congratulations! You are another proud owner of the Kit 'N' Caboodle[™] Die Cutting and Embossing Machine.

This attractive, compact, affordable and easy to use machine enables you to cut and emboss thin dies and embossing folders up to 7cm / 2.7inches in width. There is no assembly, so when you take the machine out of the box you are ready to cut or emboss with just a few turns of the handle. It's a great machine for both beginners and more experienced crafters.

Not only does the Kit 'N' Caboodle[™] Die Cutting Machine look cute, it is also a substantial piece of equipment, boasting a robust gearing system in a die cast aluminium internal body. All of that under such a stylish casing! Pop this chic little machine into your handbag or tote and craft with family and friends.

The contoured Die Cutting Machine can be secured onto a flat surface with the inbuilt suction feet, to allow you a comfortable die cutting and embossing experience.

It's neat, elegant, light and effortless; it's the Kit 'N' Caboodle[™] Die Cutting Machine!

So, let's craft!

Safety Instructions

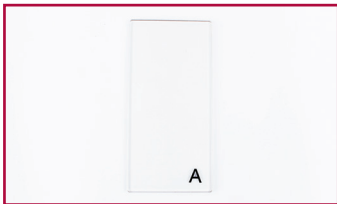
1. Always place and operate the machine on a flat, clean surface.
2. Only use attachments recommended or sold by the manufacturer.
3. Do not overload the machine.
4. Close supervision is necessary when used near children. This is not a toy.
5. Keep hands, hair and clothing away from the rollers.

Keep these instructions for future reference.

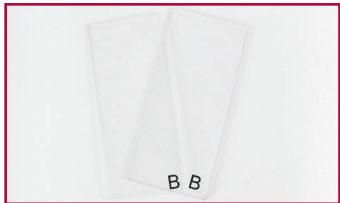
What's in the box?



1 x Kit 'N' Caboodle™
Die Cutting Machine



1 x A Base Plate



2 x B Cutting Plates

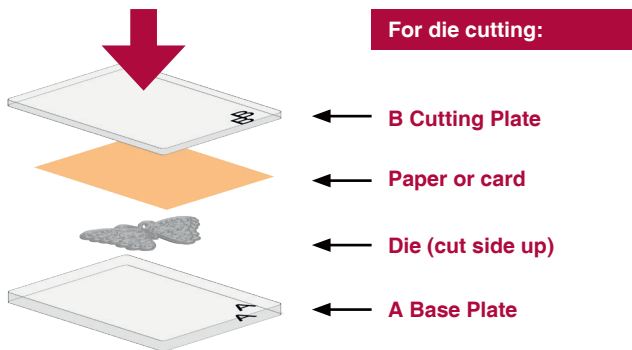


Instruction Manual

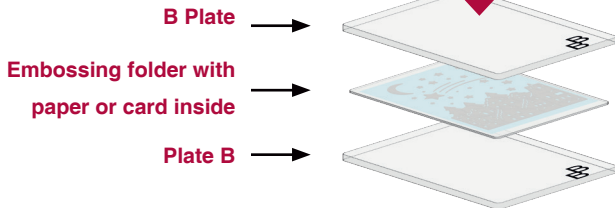
Compatible materials

- Paper
- Cardstock up to 250gsm/92lbs
- Vellum
- Parchment

Plate Combinations



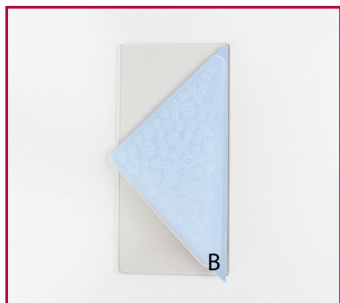
For embossing:



Instructions



TO CUT: Place the thin die onto the A Base Plate, flat side down and cut side up. Place the card/paper onto the die. Place the B Cutting Plate onto the card/paper to create the sandwich. Roll through the machine. Add a shim (paper) to the sandwich if the die is very detailed and intricate.



TO EMBOSS: Place the card/paper into the embossing folder. Place the embossing folder onto the B Cutting Plate and place the second B Cutting plate over the top. Roll through the machine. For a deeper emboss, roll the sandwich through again.

FAQ's

- 1. What are the dimensions of the largest die I can cut?**
You can cut any die up to a size of 7cm wide x 25cm long (2.7" wide x 9.8" long).
- 2. Will the Kit 'N' Caboodle™ Die Cutting Machine cut other brands of dies?**
Yes, as long as they are thin dies that fit within the plate dimensions.
- 3. What is the sandwich for using an embossing folder? B Plate, card or paper, B Plate.**
- 4. Why is the die not cutting all the way through?**
Very detailed dies may take more than one run through the machine to cut. It may also be beneficial to add a paper shim to the sandwich.
- 5. How do I emboss a long strip of card using an embossing border folder?**
Create the sandwich. Run the sandwich through the machine. Move the folder along the plates and run through again. Repeat until the strip is completely embossed.

To see our full range of products please visit:
www.kitcaboodle.co.uk
www.crafting.co.uk

Copyright © Craft Channel Productions Ltd. Chesterfield, UK, S45 9HX

